

600V FRD Full Bridge Module

Description

The Fast Recovery Diode module devices used Full Bridge Structure, and optimized to reduce losses and EMI/RFI in high frequency power conditioning electrical systems.

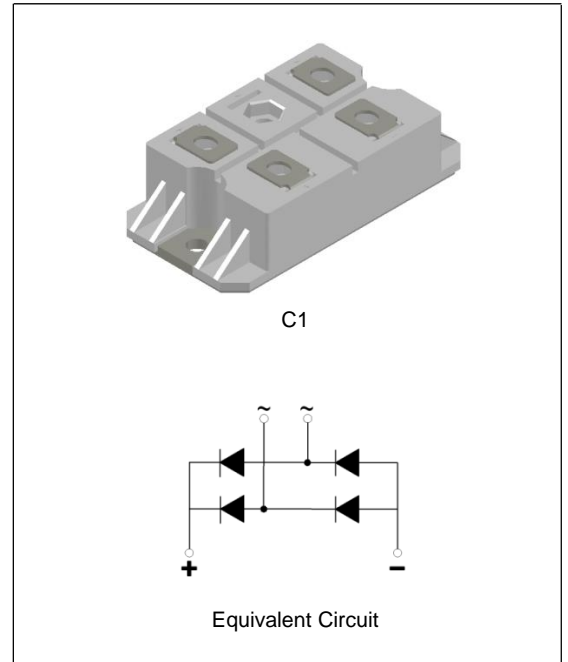
The Fast Recovery Diode module is ideally suited for power converters, inverter welders, motor drives and other applications where switching losses are significant portion of the total losses.

Features

- Repetitive Reverse Voltage: $V_{RRM} = 600V$
- Low Forward Voltage: $V_F(\text{typ.}) = 1.6V @ I_F=100A$
- Average Forward Current: $I_{F(AV)} = 100A @ T_C=100^\circ C$
- Reverse Recovery Time: $t_{rr}(\text{typ.}) = 85ns$
- Extensive Characterization of Recovery Parameters
- Reduced EMI and RFI
- Isolation Type Package
- $150^\circ C$ Operating Junction Temperature
- Built-in Full Bridge FRD Construction

Applications

- High Speed & High Power Converters, Inverter Welders
- Various Switching and Telecommunication Power Supply
- Cutting Machine



Absolute Maximum Ratings (Per diode at $T_C=25^\circ C$ unless otherwise noted)

Symbol	Parameter	Ratings	Unit
V_{RRM}	Repetitive Peak Reverse Voltage	600	V
V_R	DC Blocking Voltage	480	V
$I_{F(AV)}$	Average Rectified Forward Current	$T_C = 25^\circ C$	A
		$T_C = 100^\circ C$	
I_{FSM}	Non-repetitive Peak Surge Current 60Hz Single Half-sine Wave	1150	A
I^2t	I^2t For Fusing 60Hz Sine Wave	$5.5 * 10^3$	A^2s
P_D	Maximum Power Dissipation	270	W
V_{iso}	Isolation Voltage @AC 1 Minutes	2500	V
T_J	Junction Temperature	-55 ~ +150	$^\circ C$
T_{STG}	Storage Temperature	-55 ~ +150	$^\circ C$
	Mounting Torque (M5)	4.0	N.m
	Terminal Torque (M5)	2.0	N.m
	Weight	137	g

Electrical Characteristics (Per diode @ $T_C=25\text{ }^\circ\text{C}$ unless otherwise noted)

Symbol	Parameter	Conditions	Min.	Typ.	Max.	Unit
V_F	Forward Voltage Drop	$I_F=100\text{A}$	-	1.6	1.9	V
		$I_F=100\text{A}, T_C=100^\circ\text{C}$	-	1.4	-	V
I_{RM}	Reverse Leakage Current	$V_R=600\text{V}$	-	-	0.5	mA
		$V_R=600\text{V}, T_C=100^\circ\text{C}$	-	-	1	mA
t_{rr}	Reverse Recovery Time	$I_F=1\text{A}, di/dt=-200\text{A/us}$	-	35	-	ns
t_{rr}	Reverse Recovery Time	$I_F=100\text{A}, di/dt=-200\text{A/us}$	-	85	110	ns
I_{rr}	Reverse Recovery Current		-	12.5	-	A
t_{rr}	Reverse Recovery Time	$I_F=100\text{A}, di/dt=-200\text{A/us}, T_C=100^\circ\text{C}$	-	200	-	ns
I_{rr}	Reverse Recovery Current		-	24.2	-	A

Thermal Characteristics

Symbol	Parameter	Ratings	Unit
$R_{th(J-C)}$	Thermal Resistance, Junction to case	0.46	$^\circ\text{C/W}$

Typical Performance Characteristics

Fig. 1. Typical Characteristics: V_F vs. I_F

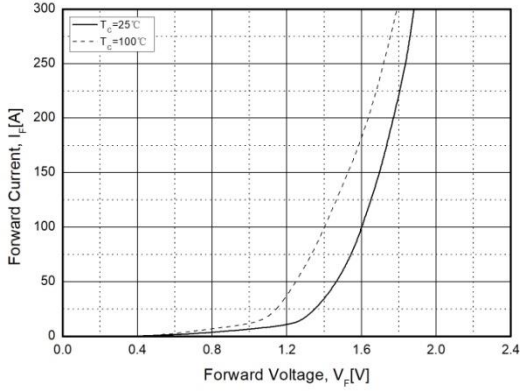


Fig. 2. Typical Reverse Recovery Time vs. di/dt

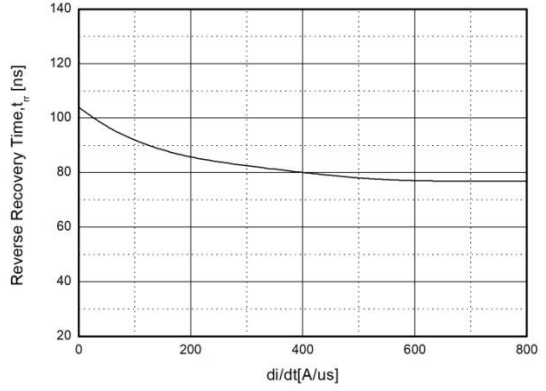


Fig. 3. Transient Thermal Impedance Characteristics ($R_{th(J-C)}$)

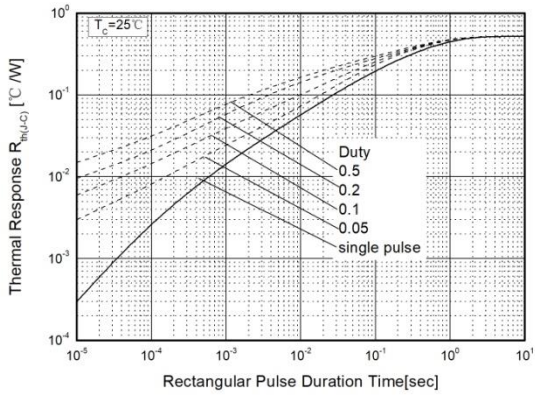
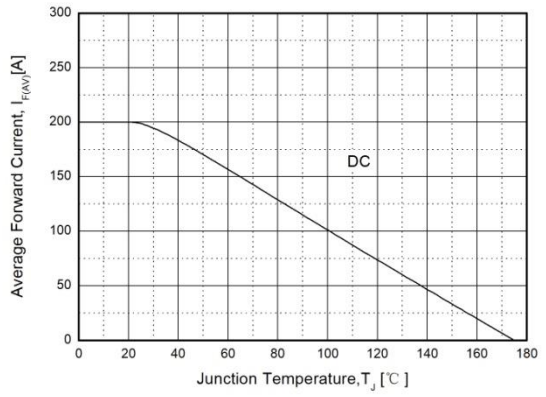
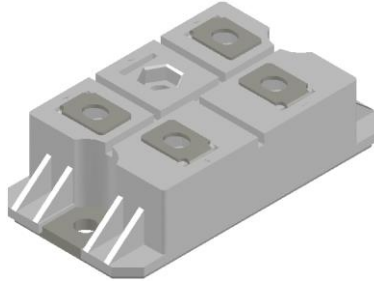


Fig. 4. Forward Current Derating Curve



Package Dimensions

C1



(Dimensions in Millimeters)

